



Residual LHC Tune Stability

Tune Viewer - LHC - DEV HC.BQBBQ.SX4.B1

File Edit Run Timing Configure Help

RBA: rstein User: LHC FFT DEV HC.BQBBQ.SX4.B1 LHC.BQPLLUA47.PLL_B1 OFSU

Info FFT PLL DataSets FB/Trim Orbit

Q-FPGA Tune Measurements

LHC - B1 - Fill#894.0
 2009-12-03 14:03:57
 RAW&FFT: 8192 turns@1.0Hz
 no excitation

Q1 = .275494	Qx = .275608
Q2 = .299774	Qy = .299660
C- = .003319	E = 450.0 GeV
Q'x = 7.888740	
Q'y = 6.939837	

Spawn TuneViewer Display

Comments:
 avg. of 4 datasets

Graph Mag H II [Grid] ACQ# 0 Misc [Zoom] [Refresh]

LHC - B1 - fill #894 - avg. of 4 datasets - HC.BQBBQ.SX4.B1 - 2009-12-03 14:03:57

horizontal amplitude [dB]

frequency [freq]

Graph Mag V II [Grid] ACQ# 0 Misc [Zoom] [Refresh]

LHC - B1 - fill #894 - avg. of 4 datasets - HC.BQBBQ.SX4.B1 - 2009-12-03 14:03:57

vertical amplitude [dB]

frequency [freq]

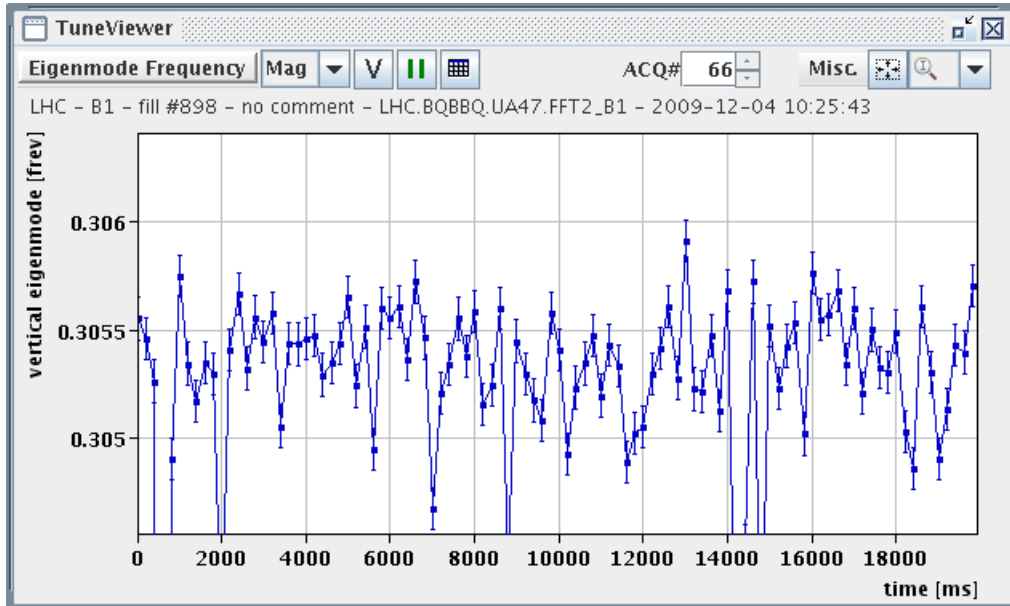
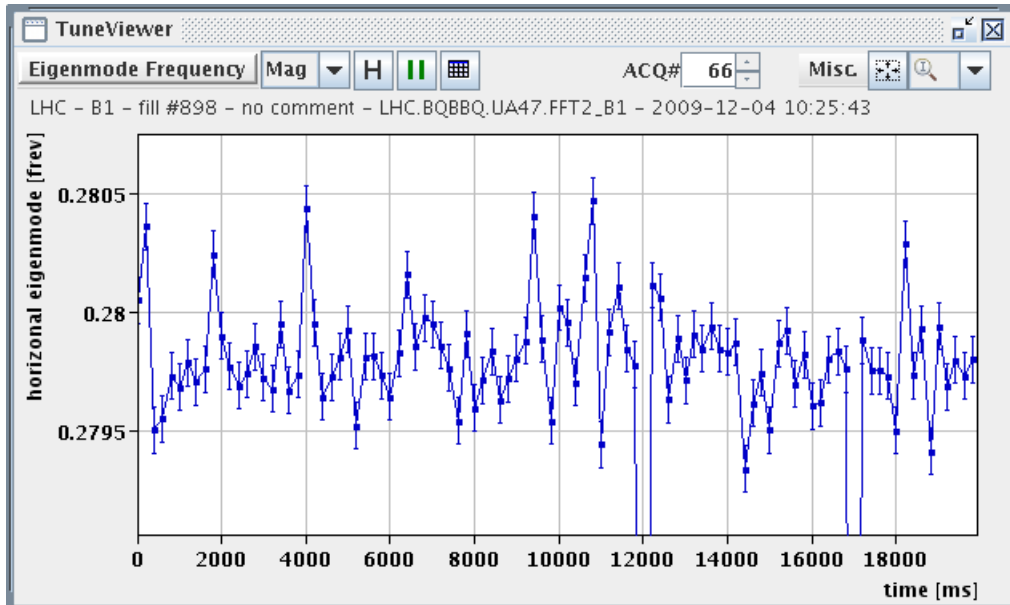
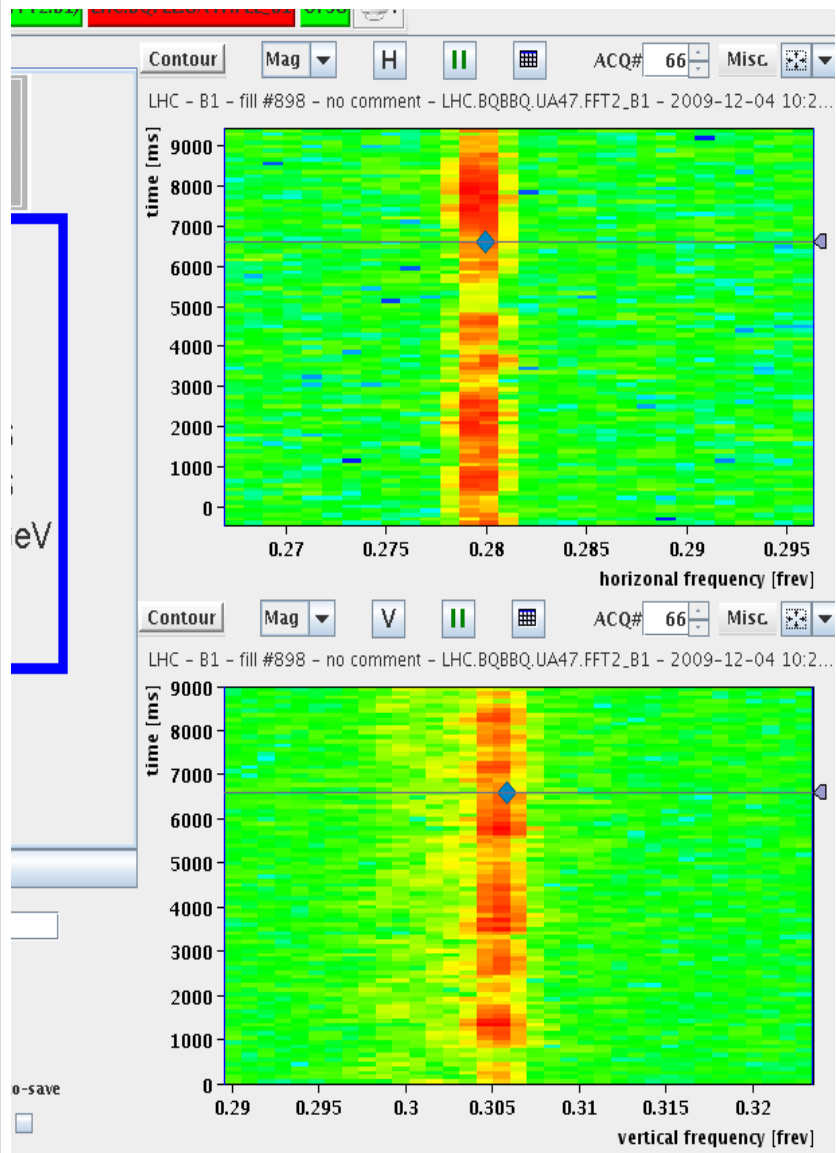
Navigation: [Previous] [Next] [Home] [Stop] [Auto-save]

LHC Beam Commissioning, Ralph.Steinhausen@CERN.ch, 2009-12-04



Residual LHC Tune Stability without excitation

LHC Beam Commissioning, Ralph.Steinhausen@CERN.ch, 2009-12-04



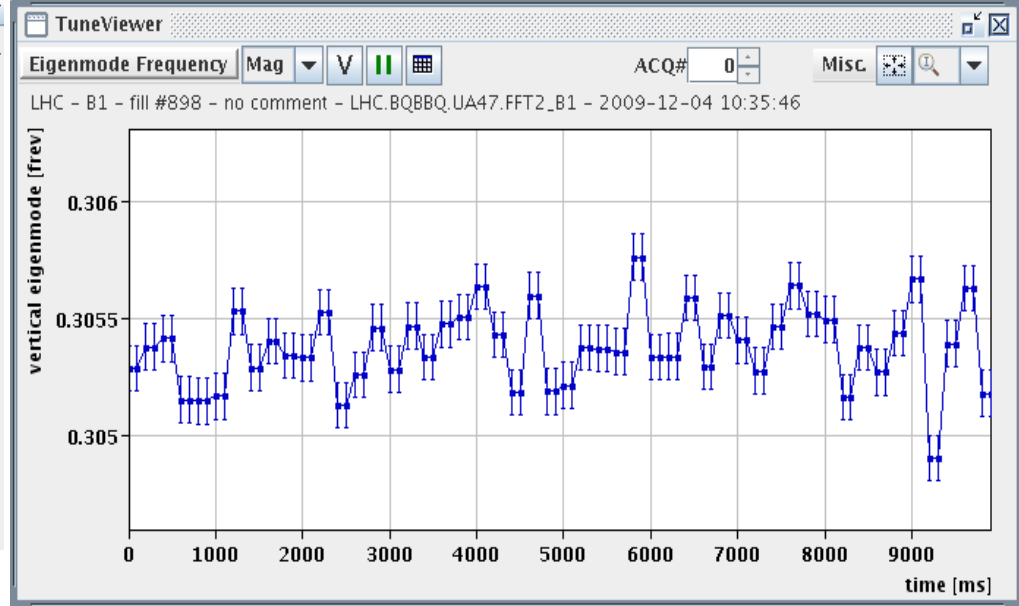
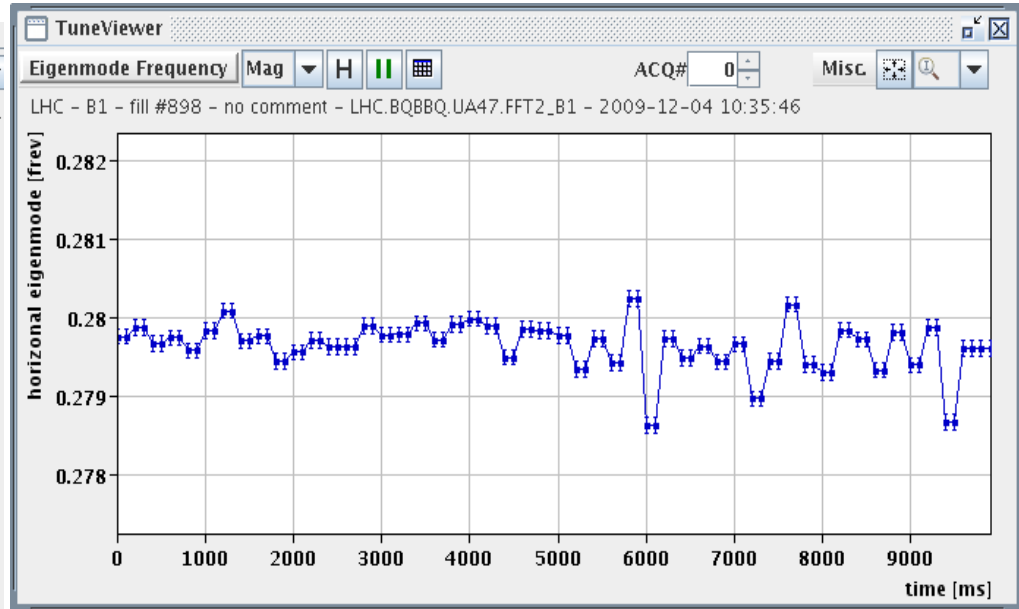
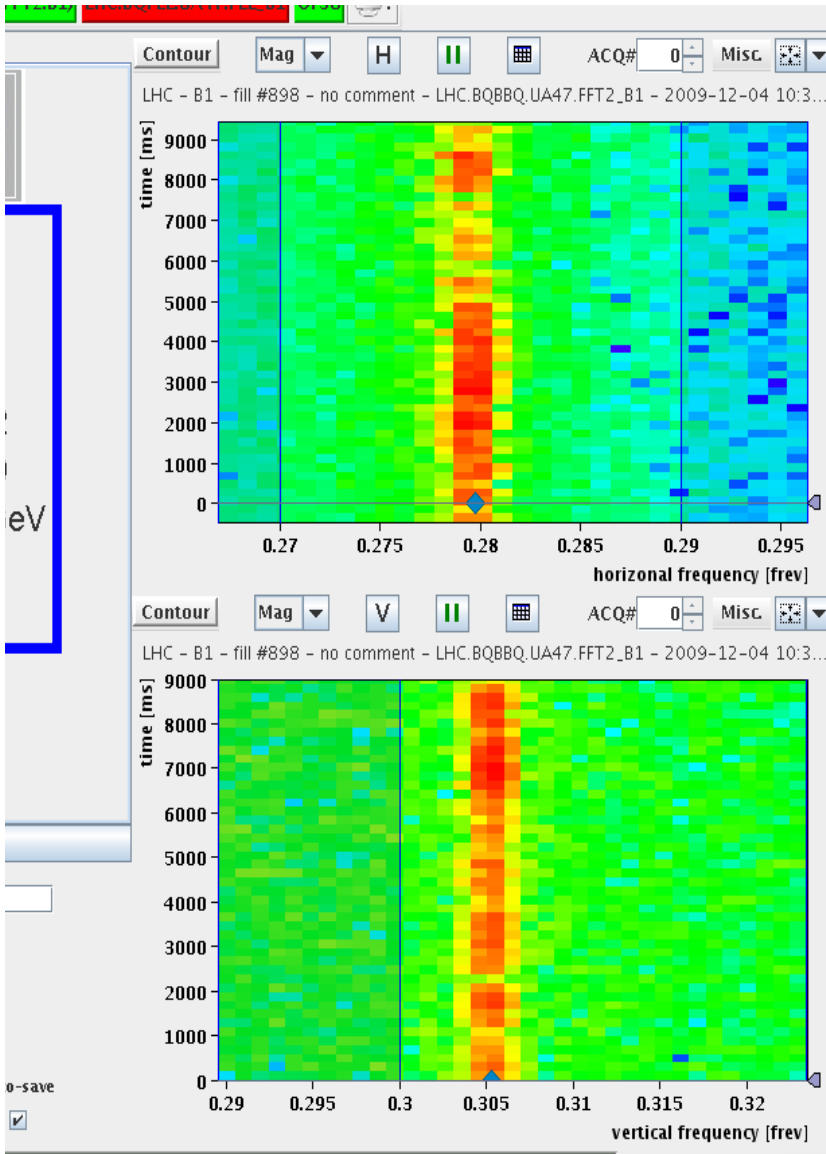
ev

o-save



Residual LHC Tune Stability with chrip-type excitation

LHC Beam Commissioning, Ralph.Steinhausen@CERN.ch, 2009-12-04

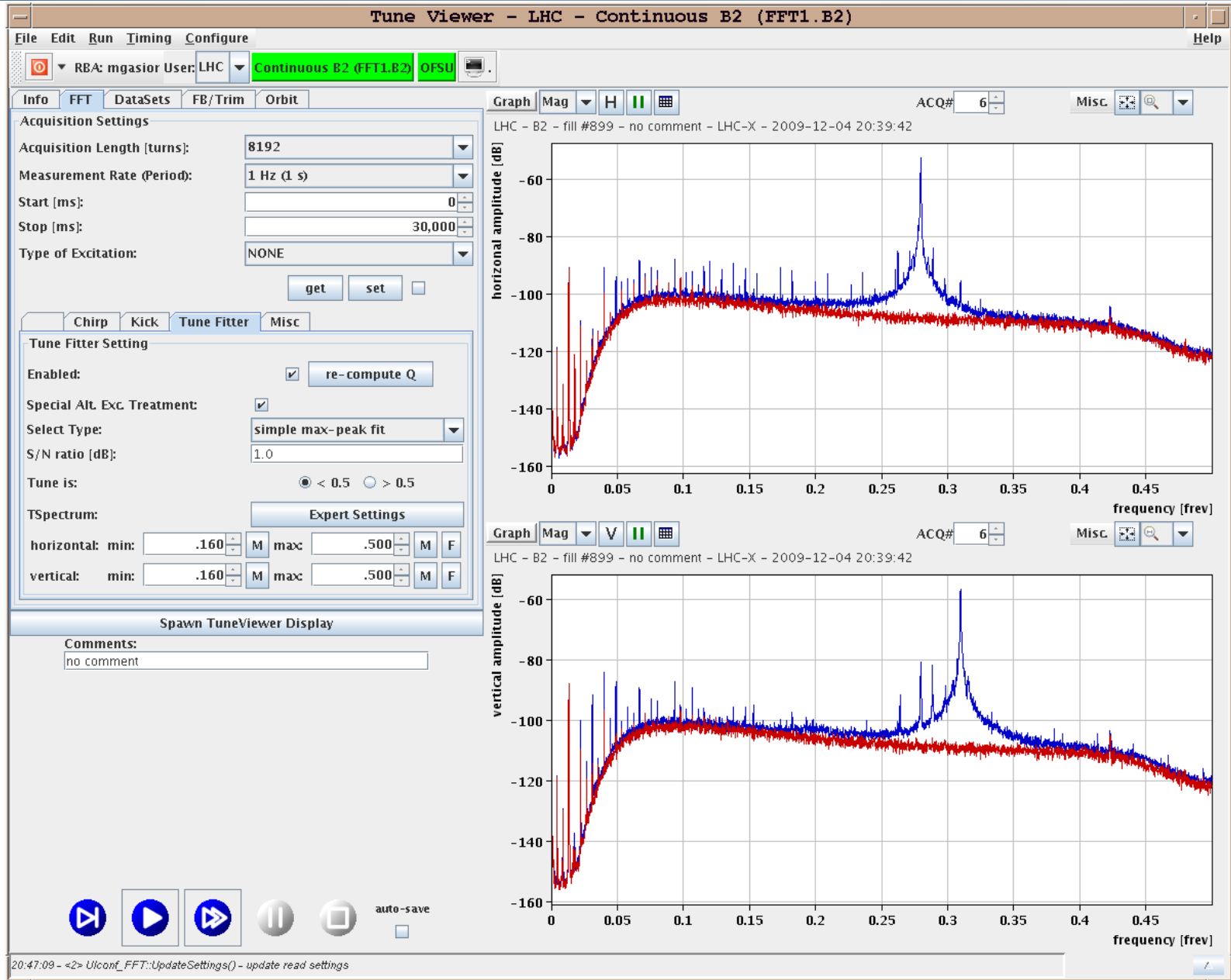




Additional slides as a follow up
of some of the questions during the meeting



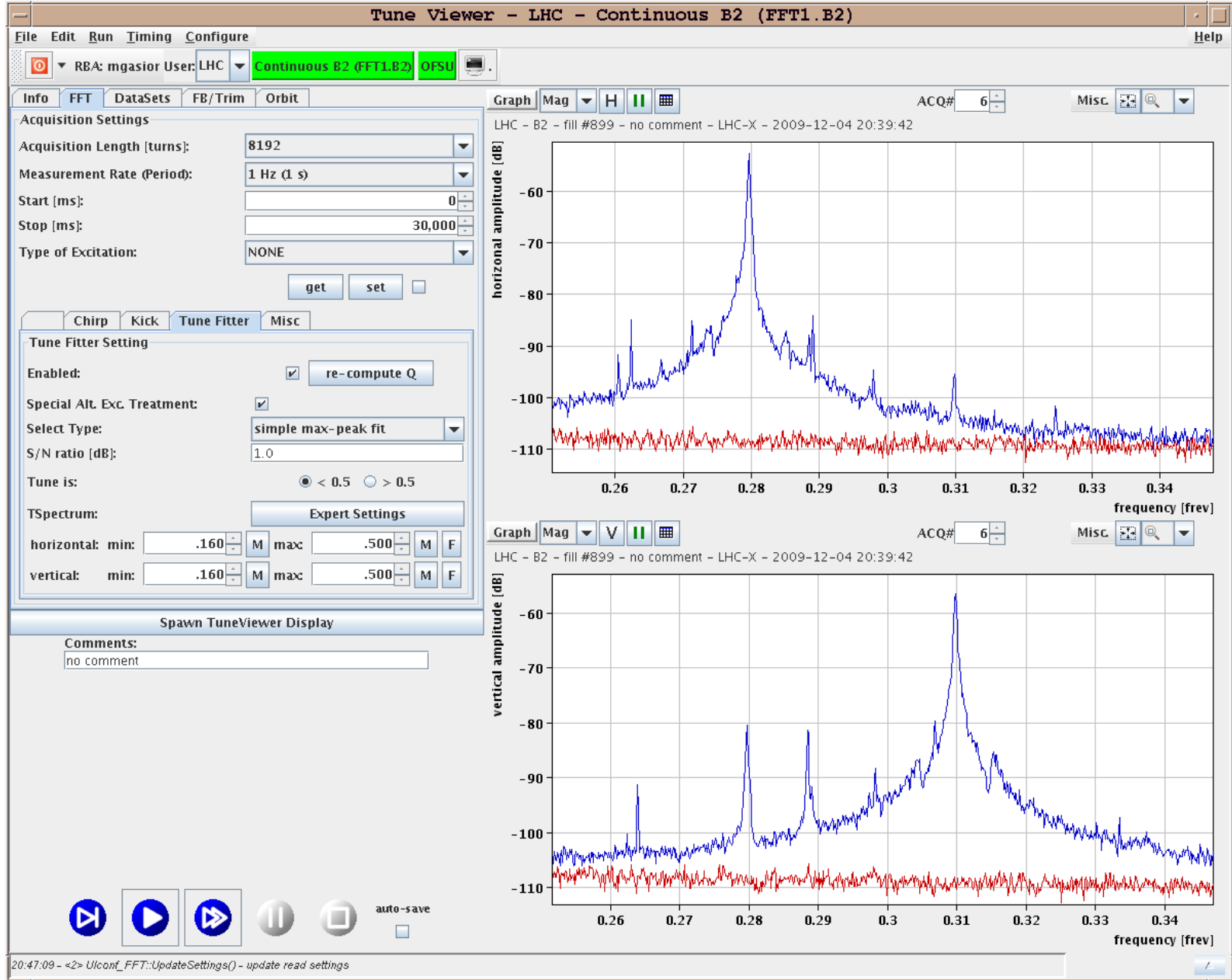
BBQ Noise Floor with (blue) and without beam (red)



LHC Beam Commissioning, Ralph.Steinhausen@CERN.ch, 2009-12-04



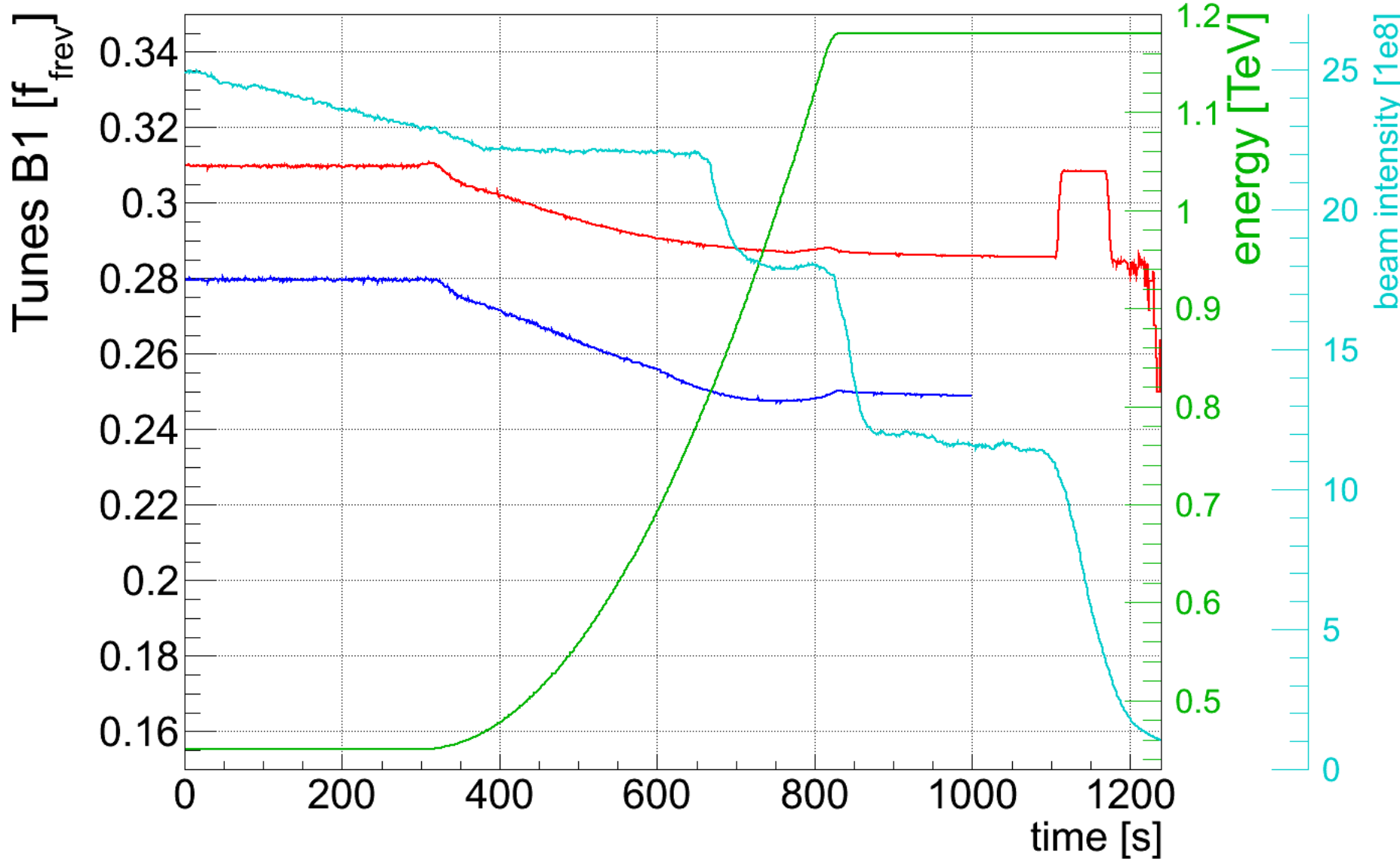
BBQ Noise Floor with (blue) and without beam (red) - ZOOM



LHC Beam Commissioning, Ralph.Steinhausen@CERN.ch, 2009-12-04



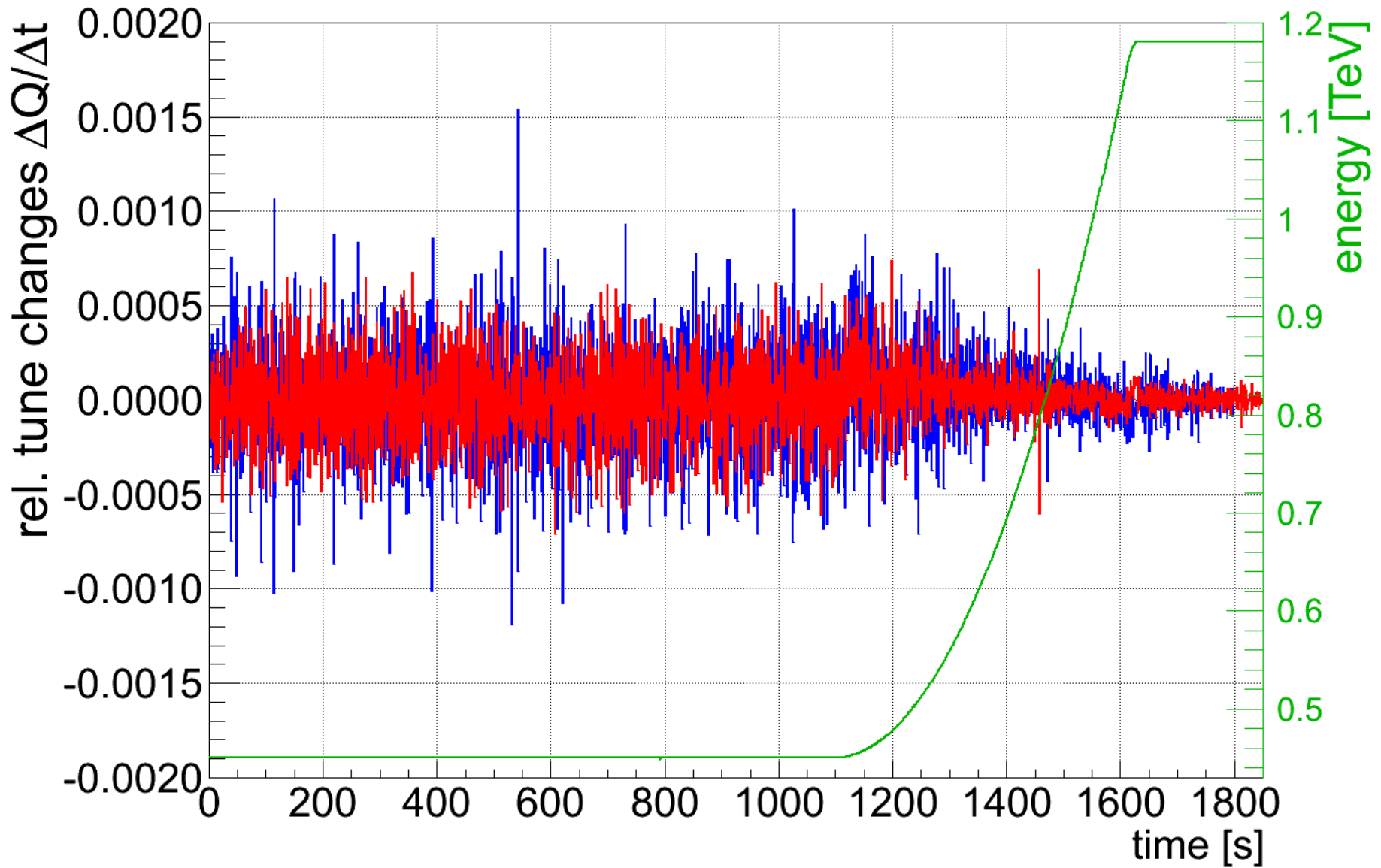
Third LHC Ramp to 1.18 TeV 2009-11-30



LHC Beam Commissioning, Ralph.Steinhausen@CERN.ch, 2009-12-04



Third LHC Ramp to 1.18 TeV 2009-11-30 – Residual Tune Ripple



LHC Beam Commissioning, Ralph.Steinhausen@CERN.ch, 2009-12-04

